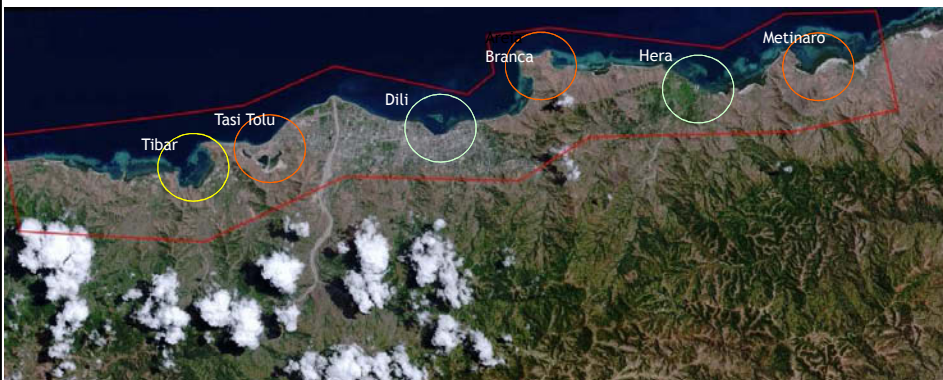


Tibar Port

Initial Progress Report

Technical Presentation
IFC: February 2013

Possible Port Locations Near Dili



No Land Space for Expansion at Dili Port



Assumed GoTL Port Location Selection Criteria

- **sheltered** - protection from sea swell/waves and storms
- **relatively close proximity to Dili** – within 15 km by road
- **adequate wharf berthing length** - including future expansion
- **adequate land area** - landside storage and administration facilities
- **low impact on existing landside developments and settlements**

Port Layout Options

Final option will depend on:
[Economic](#), [Engineering](#), [Environmental](#) & [Social Criteria](#)

Option 1A



Option 1B



Option 1C



Port Layout Options (cont.)

Option 2A



Option 2B



Port Layout Options (cont.)

Option 3

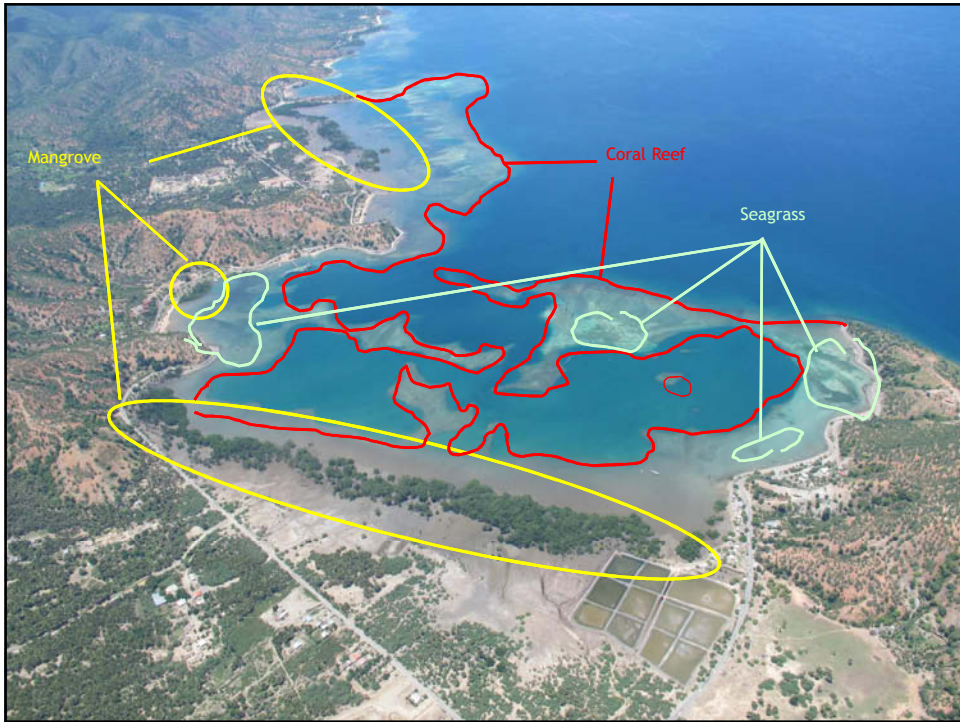


Possible Option 4



Scoping - Main Environmental and Social Criteria being Assessed

- **Bay marine habitat types & unique species**
 - coral
 - seagrass
 - mangroves
 - deeper water
- **Terrestrial habitat**
 - potentially directly & indirectly affected by the port
- **Local settlements & livelihoods**
 - households along the foreshore
 - impact on local livelihoods - fishing, fish farming, grazing, salt, etc
- **Other developments**
 - Dili-Liquica road
 - Oil terminal
 - Tibar Bay Resort



Initial Comparison of Tibar Bay Port Site Options - Main Environmental and Social Issues

Option	Location	Main Likely Impacts	
		Environmental	Social
1A	Northeast corner	<ul style="list-style-type: none"> Mangrove removal - large Coral - moderate Mudflat development - minor to moderate 	<ul style="list-style-type: none"> Resettlement - 10 houses Close proximity to remaining houses
1B	Northeast corner - offset into bay, north of mangroves	<ul style="list-style-type: none"> Coral removal - moderate Mangrove backwater created 	<ul style="list-style-type: none"> Resettlement - 10 houses Fish pond removal
1C	Southeast corner	<ul style="list-style-type: none"> Mangrove removal - large Coral removal - moderate Mudflat development - large 	<ul style="list-style-type: none"> Resettlement - 1-2 houses
2	Southeast side bay - short wharf	<ul style="list-style-type: none"> Seagrass removal - large Mangrove removal - minor Coral removal - moderate 	<ul style="list-style-type: none"> Oil terminal removal Resettlement - 3-4 houses Resort - loss of amenity Road relocation - 250 m
2B	Southeast side bay - long wharf	<ul style="list-style-type: none"> Seagrass removal - large Mangrove removal - moderate Coral removal - moderate 	<ul style="list-style-type: none"> Oil terminal removal Resettlement - 3-4 houses Resort - loss of amenity Road relocation - 250 m
3	Northeast bay - offset from shoreline	<ul style="list-style-type: none"> Seawall construction along reef/rock shelf - around 750 m Seagrass removal - moderate Creation of large bay backwater 	<ul style="list-style-type: none"> Resettlement - 10 houses Fish pond removal
4	Northern reef and eastern shoreline	<ul style="list-style-type: none"> Coral - large Seagrass - moderate Removal of large volume of spoil - underlying reef (dead coral) 	<ul style="list-style-type: none"> Resettlement - 4-5 houses Loss of fishing boat mooring area

Note: preliminary information only.

Environmental & Social Scoping Report

- **Desktop study**
 - completed January
- **Field surveys**
 - completed 28 January – 15 February
- **Inception Report**
 - due ? March
- **Scoping Report**
 - due ? April
 - identification of major E&S issues
 - initial assessment of major E&S issues
 - detailed ESIA terms of reference
 - E&S analysis of Tibar Bay site options